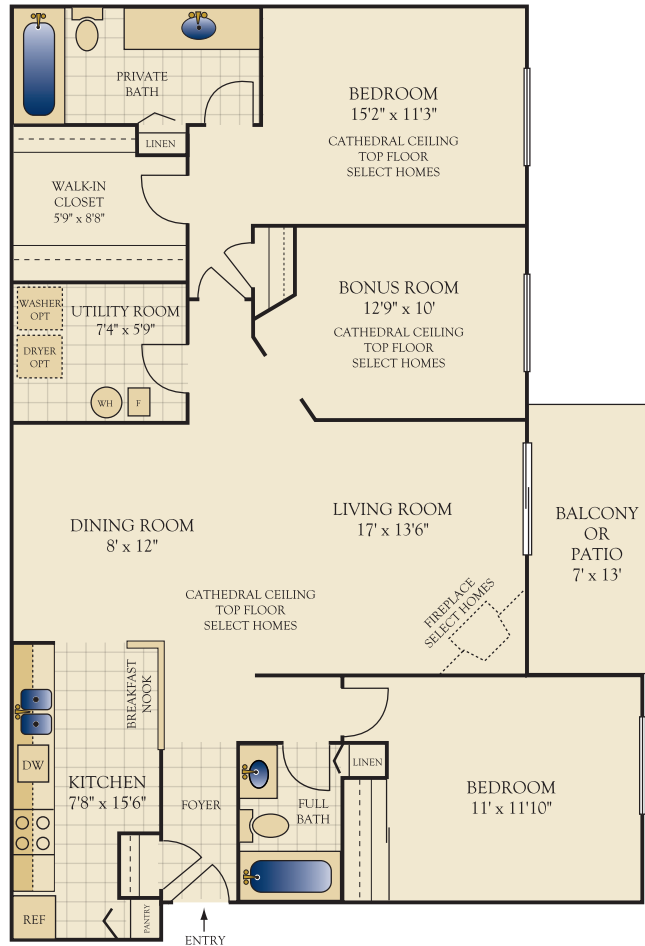


# Welcome to... Waterford PLACE

## The Parties

**Two Bedroom with Bonus Room/Two Bath**  
**1332 Square Feet**



### Your Apartment Home

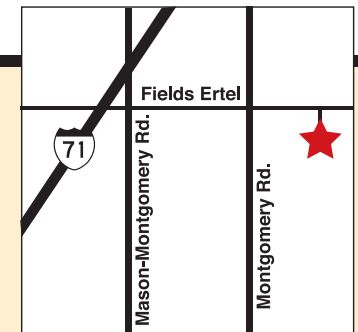
- Laminate wood flooring in entry
- 9' ceilings and oversized windows
- Ceiling fan outlets in living room and bedrooms
- Utility room with full size washer/dryer connections
- Name brand Whirlpool appliances
- Genuine wood cabinetry with oak finish
- Ceramic tile tub surrounds
- Fireplace and vaulted ceilings available in select homes

### Your Community

- Intercom access buildings
- Attached and detached garages available
- Well-appointed fitness center with cardio machines and free weights
- Resort-style swimming pool with expansive sun deck
- Two lighted tennis courts
- Pets welcome\*

### Your Services

- Resident activities
- Resident referral program
- Package delivery and pick-up services
- 24-hour on-call emergency maintenance
- RentQuest automated rent payment program



9630 Waterford Place • Loveland, OH 45140

**513-677-5300**

waterford@hillscommunities.com • myhillsapartment.com

Office hours: Mon. - Fri 10 - 6; Sat. 10 - 5; Sun 12-5

From I-71 North, take exit 19 (Fields-Ertel Rd). From the exit turn left on Mason-Montgomery Rd. and right on Felids-Ertel Rd. Follow past Montgomery Rd. We're on the right in the clubhouse. Welcome Home!

\*Certain restrictions apply.

