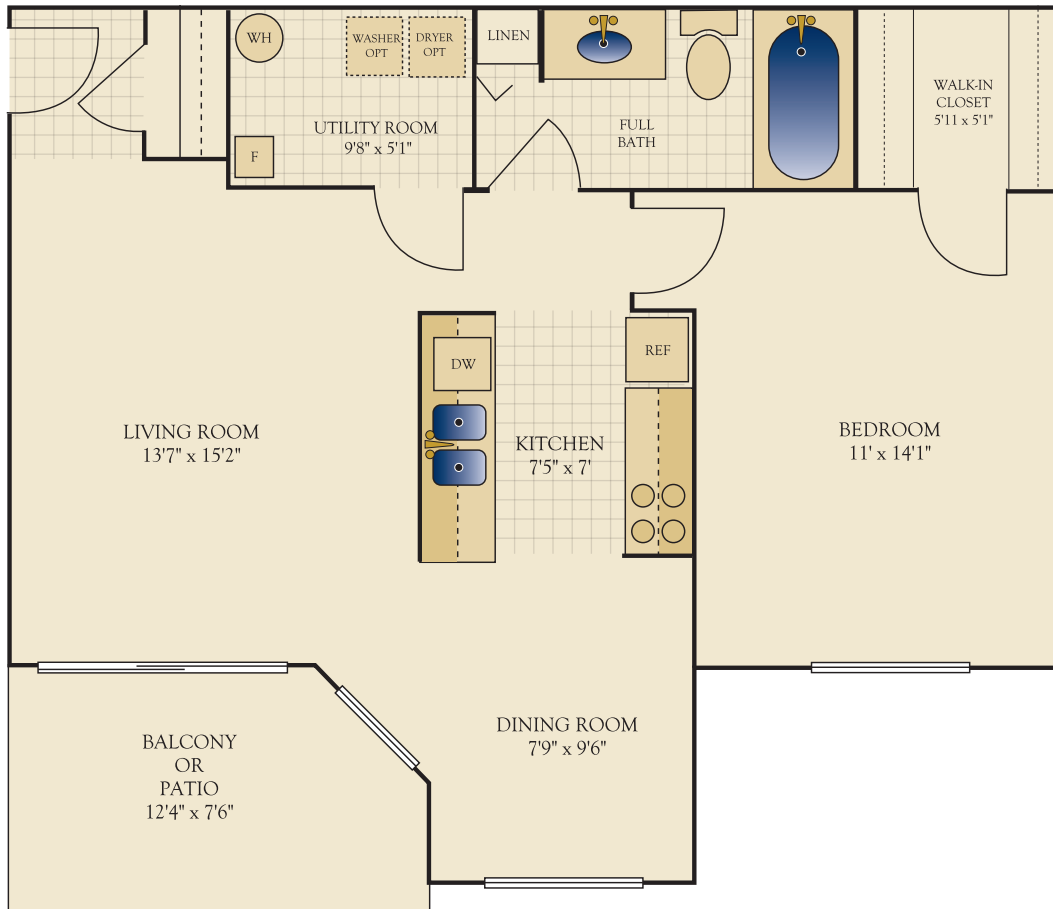


*The Rosewood*

**One Bedroom / One Bath  
742 Square Feet**



**Your Apartment Home**

- Laminate wood flooring in entry
- 9' ceilings and oversized windows
- Ceiling fan outlets in living room and bedroom
- Utility room with full size washer/dryer connections
- Name brand Whirlpool® appliances
- Genuine wood cabinetry with oak finish
- Ceramic tile tub surround
- Fireplace and vaulted ceilings available in select homes

**Your Community**

- Intercom access buildings
- Garages available
- Well-appointed fitness center with cardio machines and free weights
- Resort-style swimming pool with expansive sun deck
- Tennis court
- Pets welcome\*

**Your Services**

- Resident activities
- Resident referral program
- Package delivery and pick-up services
- 24-hour on-call emergency maintenance
- RentQuest automated rent payment program



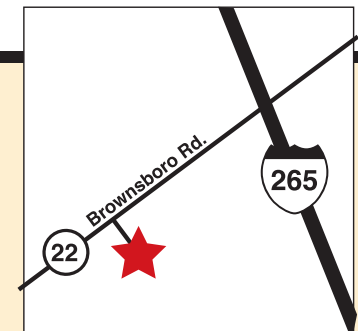
10400 Shadow Ridge Lane • Louisville, KY 40241

**502-412-7400**

[shadow@hillscommunities.com](mailto:shadow@hillscommunities.com) • [myhillsapartment.com](http://myhillsapartment.com)

Office hours: Mon. - Fri 10 - 6; Sat. 10 - 5; Sun 12-5

Take the Gene Snyder Freeway (I-265) to exit 22 - Brownsboro Road (Highway 22). Go east one mile to the community entrance. Shadow Ridge is on the left.



\*Certain restrictions apply.